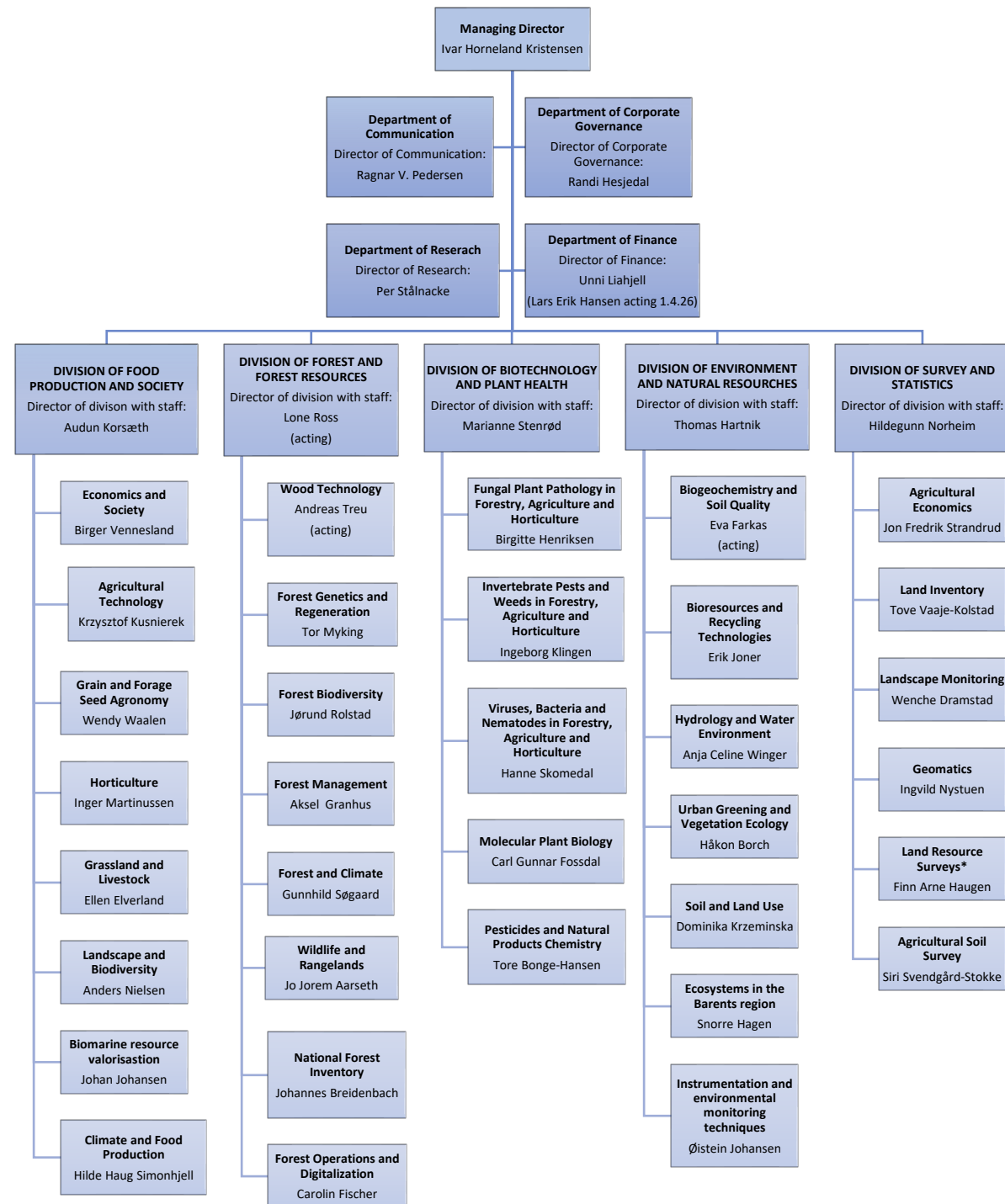


NIBIO organization structure
from 1st of February 2026

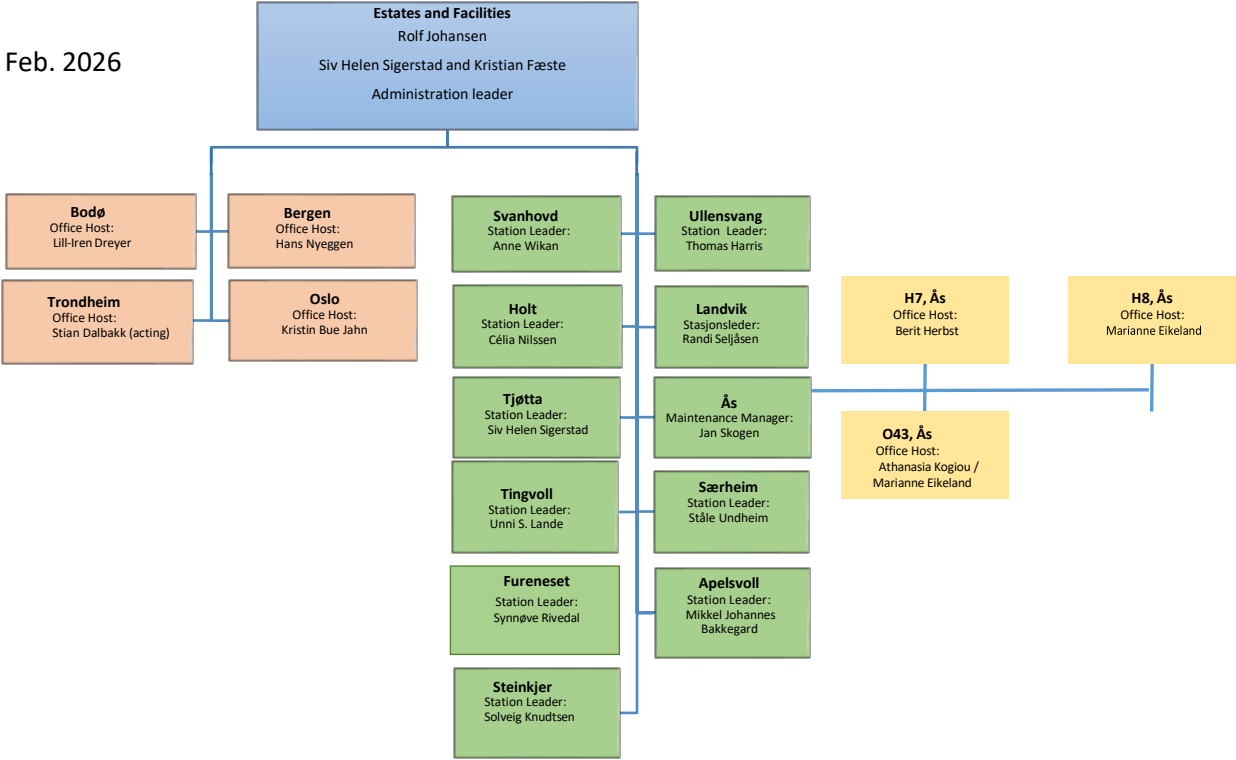


*Norwegian Genetic Resource Center is organized under Land Resource Surveys

Underlying organization structure from the 1st of Feb. 2026
for Department Estates and Facilities.

Stations (10): Svanhovd, Holt, Tjøtta,
Ullensvang, Tingvoll, Fureneset,
Særheim, Landvik, Apelsvoll, Steinkjer and Ås (with
offices in H7,H8 and O43).

Offices (4): Bodø, Trondheim,
Bergen og Oslo.



Underlying organization structure
from 1st of January 2026 for
Corporate Governance and
Finance.

