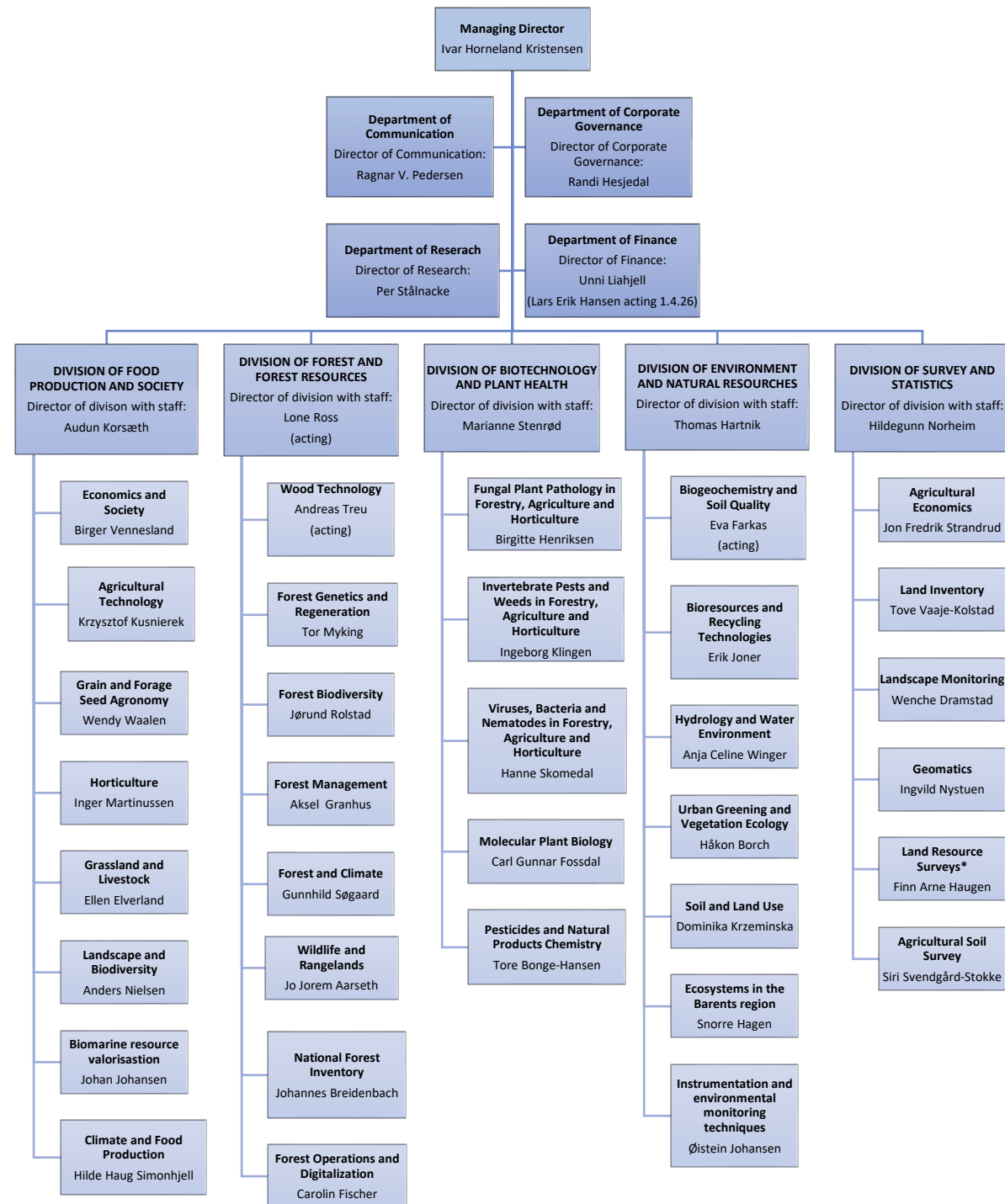


NIBIO organization structure  
from 1st of January 2026

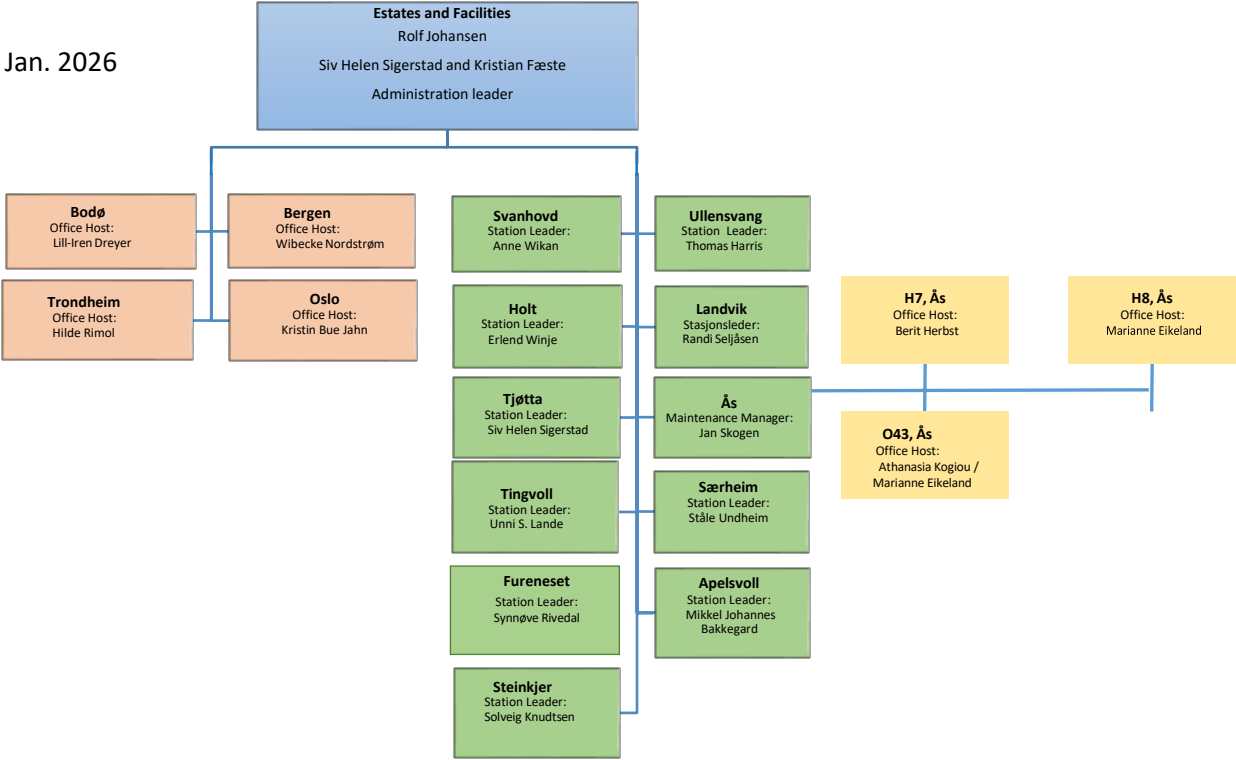


\*Norwegian Genetic Resource Center is organized under Land Resource Surveys

Underlying organization structure from the 1st of Jan. 2026  
for Department Estates and Facilities.

Stations (10): Svanhovd, Holt, Tjøtta,  
Ullensvang, Tingvoll, Fureneset,  
Særheim, Landvik, Apelsvoll, Steinkjer and Ås (with  
offices in H7,H8 and O43).

Offices (4): Bodø, Trondheim,  
Bergen og Oslo.



Underlying organization structure  
from 1st of January 2026 for  
Corporate Governance and  
Finance.

