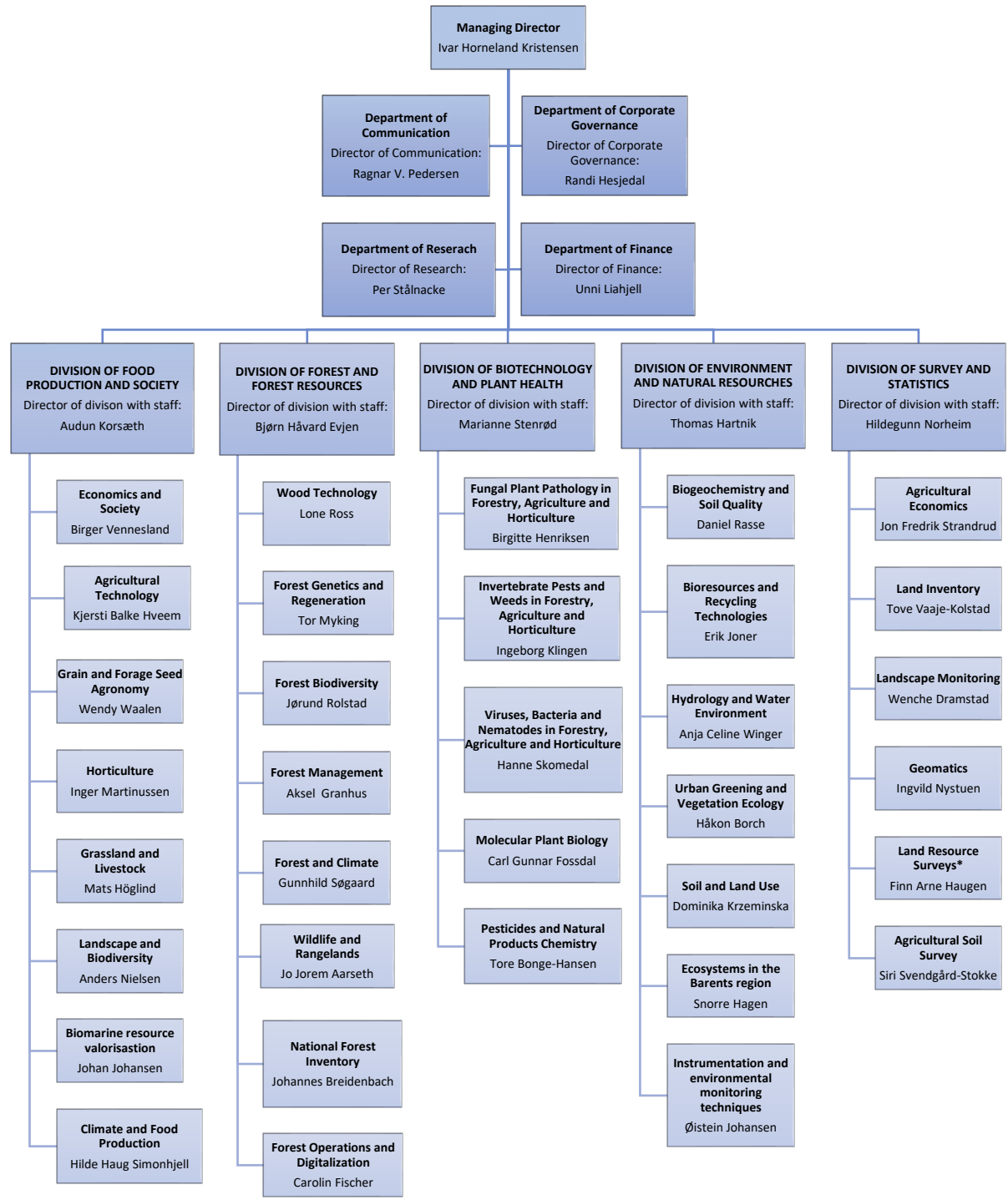


NIBIO organization structure
from 1st of January 2025

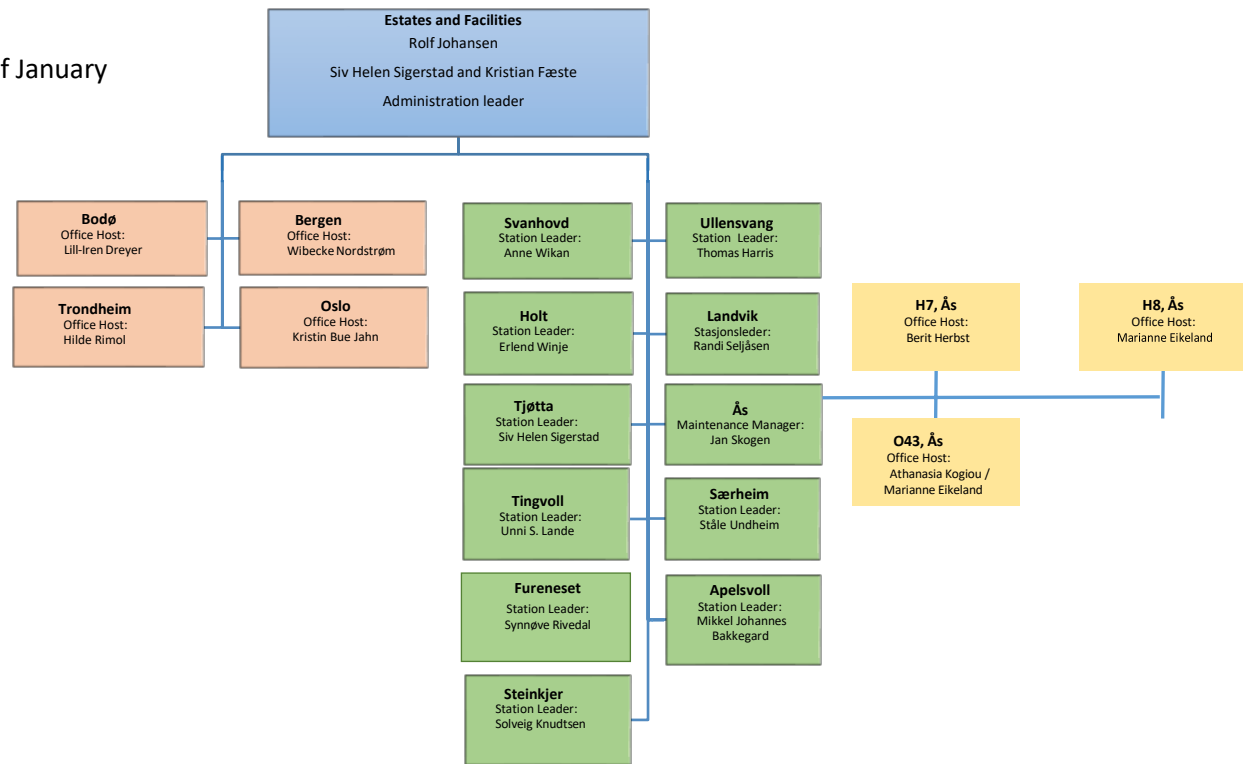


*Norwegian Genetic Resource Center is organized under Land Resource Surveys

Underlying organization structure from the 1st of January 2025 for Department Estates and Facilities.

Stations (10): Svanhovd, Holt, Tjøtta, Ullensvang, Tingvoll, Fureneset, Særheim, Landvik, Apelsvoll, Steinkjer and Ås (with offices in H7, H8 and O43).

Offices (4): Bodø, Trondheim, Bergen og Oslo.



Underlying organization structure
from 1st of January 2025 for
Corporate Governance and
Finance.

